

SmartBox™



ETwater SmartBox™ Controller

Designed for new construction or when you need to completely replace an old system. This top-of-the-line system is a complete controller in a lightweight, durable aluminum enclosure that mounts on a wall or in a pedestal. It installs in approximately two hours.



ALL MODELS INCLUDE

- **Plug-in station output modules** available in 8-station increments.
- **Station output terminals** sized for up to 12 gauge wire.
- **Back lit LCD display provides output verification** for station being irrigated.
- **Chassis-mounted grounding lug** for added lightning protection.
- **120 VAC input and 24 VAC output.**
- **All 24V output terminals have surge protection** rated up to 4KV in accordance with IEC 6100-4-5 standard.
- **All outputs protected** by a 2.0 amp self-resetting fuse.
- **Input power draw:** 1.0 amp or less at 120 volts VAC.
- **Each station, boost pump, and master valve output terminal** can handle up to two 24V solenoids.
- **Total controller output is 2.0 amps** which can typically operate 4 solenoids, including master valve and pump relay.
- **In event of power outage,** non-volatile memory retains all programming information indefinitely.
- **Three (3) year** controller limited warranty.
- **FCC approved.**

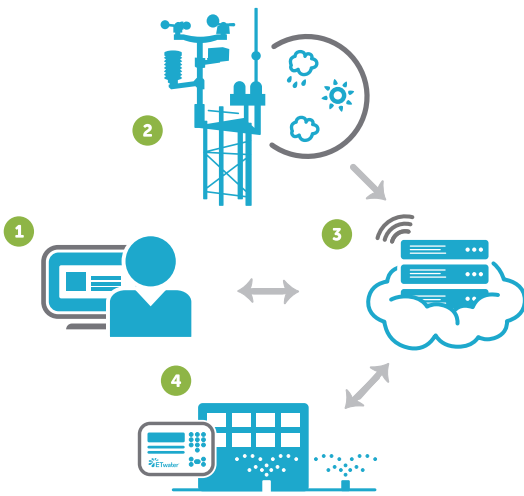
SMARTBOX CONTROLLER FEATURES

- **Capacity to 48 stations** in 8-station increments.
- **Durable, weather-resistant** aluminum enclosure with locking cabinet for indoor or outdoor use suitable for wall mounting and selected pedestal installations.
- **Program and schedule display for each zone.**
- **Manual operation of individual stations or all stations** from 1-255 minutes in 1-minute increments.
- **Manually water** up to 4 stations concurrently.
- **Easy-to-use keypad** for viewing programs, manual (offline) valve operation and other system functions.
- **Plug-in interface** for Rain Master® and certain other remote control systems.
- **Standard connections** for rain sensor, booster pump, master valve, and flow sensor. Compatible with normally open or normally closed master valves, rain/freeze or wind sensors.
- **Alerts sent via email** to report any open or shorted stations.
- **Controller keypad** can be used to test one or all stations for OK, open or shorted circuits.
- **Colored LED panel lights** report activity status for rain sensor, flow sensor, or open or shorted valve.
- **Made in the USA.**
- **FCC approved.**

AVAILABILITY

- Local weather updates and custom irrigation schedules available to ETwater customers from more than 10,000 weather stations throughout U.S.
- ETwater local service personnel and/or distributors available throughout the U.S.

HOW IT WORKS



1. Use the ETwater Manager™ online management system to set up your account by entering your landscape profiles. Then, install the SmartBox onsite.
2. A local weather station provides daily weather and rainfall data.
3. ETwater servers access the weather data, compute evapotranspiration, and generate daily watering schedules for each landscape profile. Servers then connect wirelessly to ETwater smart controllers to exchange schedules and data.
4. ETwater smart controllers execute daily irrigation schedules.

HARDWARE + ELECTRICAL SPECIFICATIONS

- EPA WaterSense approved.



SmartBox Model 105

- Capacity: 8, 16 or 24 stations
- Weight: 8 lb.
- Dimensions: 11.5" W x 9.5" H x 4.75" D
- Wireless communication

SmartBox Model 205

- Capacity: 8, 16, 24, 32, 40 or 48 stations
- Weight: 10 lb.
- Dimensions: 14.5" W x 12.5" H x 4.75" D
- Wireless communication

OPTIONAL ACCESSORIES

- **High gain antenna** for improved cell reception.
- **Vandal-resistant external mount antenna.**
- **Universal Remote Adapter** provides a quick connection between an ETwater smart controller and a remote control system.
- **Rugged stand-alone pedestal** fits ETwater model 205. Removable cover can be closed with lock and key. Constructed of weather resistant cold rolled steel with powder coating.

HOW TO SPECIFY ETWATER SMARTBOX CONTROLLERS

105W-8	8 station model 105 controller
105W-16	16 station model 105 controller
105W-24	24 station model 105 controller
205W-8	8 station model 205 controller
205W-16	16 station model 205 controller
205W-24	24 station model 205 controller
205W-32	32 station model 205 controller
205W-40	40 station model 205 controller
205W-48	48 station model 205 controller